



PACIFIC CARGO CONTROL, INC.
Interior Van Products



www.pacificcargo.com

Available in custom lengths, colors, fittings and stencils

Standard Color Code for Logistic Straps



Yellow
= 12 foot



Grey
= 16 foot



Blue
= 20 foot

2" Logistic Ratchet Straps w/ Spring E Fittings



2350-12-SE
2" x 12' SERIES E OR A RATCHET STRAP
W/ SPRING E FITTINGS



2350-16-SE
2" X 16' SERIES E OR A RATCHET STRAP
W/ SPRING E FITTINGS



2350-20-SE
2" X 20' SERIES E OR A RATCHET STRAP
W/ SPRING E FITTINGS

2" Logistic Ratchet Straps w/ Plate Trailer Hooks



2350-12-SFH 2" x 12' SERIES F RATCHET STRAP W/ PLATE TRAILER HOOKS
2350-16-SFH 2" x 16' SERIES F RATCHET STRAP W/ PLATE TRAILER HOOKS
2350-20-SFH 2" x 20' SERIES F RATCHET STRAP W/ PLATE TRAILER HOOKS

2" Logistic Ratchet Straps w/ Wire Hooks



2350-12-WH 2" x 12' SERIES F, E OR A RATCHET STRAP W/ WIRE HOOKS
2350-16-WH 2" x 16' SERIES F, E OR A RATCHET STRAP W/ WIRE HOOKS
2350-20-WH 2" x 20' SERIES F, E OR A RATCHET STRAP W/ WIRE HOOKS

2" Logistic Cam Straps w/ Spring E Fittings



2360-12-SE
2" x 12' SERIES E OR A CAM STRAP
W/ SPRING E FITTINGS



2360-16-SE
2" X 16' SERIES E OR A CAM STRAP
W/ SPRING E FITTINGS



2360-20-SE
2" X 20' SERIES E OR A CAM STRAP
W/ SPRING E FITTINGS

2" Logistic Cam Straps w/ Plate Trailer Hooks



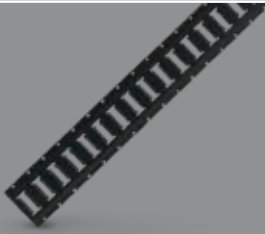
2360-12-SFH 2" x 12' SERIES F CAM STRAP W/ PLATE TRAILER HOOKS
2360-16-SFH 2" x 16' SERIES F CAM STRAP W/ PLATE TRAILER HOOKS
2360-20-SFH 2" x 20' SERIES F CAM STRAP W/ PLATE TRAILER HOOKS

2" Logistic Cam Straps w/ Wire Hooks



2360-12-WH 2" x 12' SERIES F, E OR A CAM STRAP W/ WIRE HOOKS
2360-16-WH 2" x 16' SERIES F, E OR A CAM STRAP W/ WIRE HOOKS
2360-20-WH 2" x 20' SERIES F, E OR A CAM STRAP W/ WIRE HOOKS

Logistic Tracks



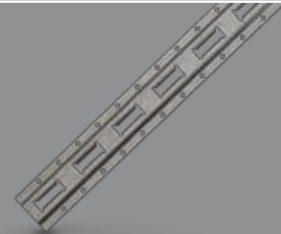
4212
SERIES E HORIZONTAL TRACK,
PAINTED - 10 FT
4212-5
SERIES E HORIZONTAL TRACK,
PAINTED - 5 FT



4212-G
SERIES E HORIZONTAL TRACK,
GALVANIZED - 10 FT
4212-G-5
SERIES E HORIZONTAL TRACK,
GALVANIZED - 5 FT



4210
SERIES E VERTICAL TRACK,
PAINTED - 10 FT
4210-5
SERIES E VERTICAL TRACK,
PAINTED - 5 FT



4210-G
SERIES E VERTICAL TRACK,
GALVANIZED - 10 FT
4210-G-5
SERIES E VERTICAL TRACK,
GALVANIZED - 5 FT



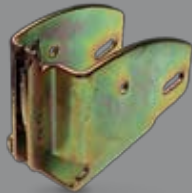
4200-EC
PLASTIC END CLIPS FOR
HORIZONTAL E TRACK
- FINISHES EDGE



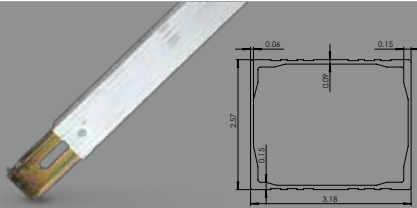
4202
VERSATILE TIE-DOWN
MANIFOLD
ACCEPTS ALL INTERIOR
VAN FITTINGS

Series E or A Decking/Shoring Beams

Custom Length Beams Available



4245
SERIES E OR A
STANDARD LOCKING
WOOD BEAM SOCKET



5020
SERIES E OR A ALUMINUM BEAM FOR
96" WIDE TRAILERS
5025
SERIES E OR A ALUMINUM BEAM FOR
102" WIDE TRAILERS



5025-RK
SERIES E
REPLACEMENT
HEAD AND
PIN - ALUMINUM
BEAM



5037
SERIES F ROUND BAR - 89" - 116"

Rope Tie-Offs



2300-06-SE
2" x 6" SERIES E OR A ROPE TIE OFF
W/ SPRING E FITTING



2300-06-SE-SA
2" x 6" SERIES E OR A 'SA' TIE OFF
W/ SPRING E FITTING

Logistic Track Fittings



EFTG-2CR-6M
 SERIES E/A SPRING FITTING W/ 2" CIRCLE RING - 6,000 LB.
 ALSO AVAILABLE WITH V-RING.



EFTG-2DR
 SERIES E/A SPRING FITTING W/ 2" D-RING - 4,000 LB.



EFTG-2CR
 SERIES E/A SPRING FITTING W/ 2" CIRCLE RING - 4,500 LB.



EFTG-2DR-6M
 SERIES E/A SPRING FITTING W/ 2" V-RING - 6,000 LB.



EFTG-2CR-3M
 SERIES E/A SPRING FITTING W/ 2" CIRCLE RING - 3,000 LB.

Pan Fittings



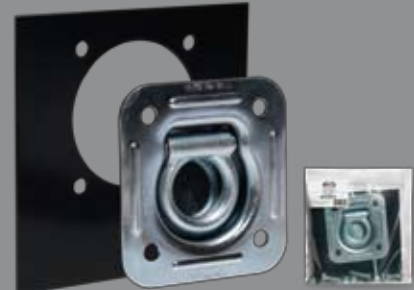
4265
 LIGHT DUTY RECESSED FLOOR RING



4290
 LIGHT DUTY RECESSED FLOOR RING



VR-025
 1/4" V-RING W/ BOLT-ON CLIP



4275 RECESSED FLOOR RING - GALVANIZED
4275-MP MOUNTING PLATE FOR 4275
4275-MP-K AVAILABLE AS KIT



4293 PAN FITTING W/ D-RING - PLASTIC BASE



4294 PAN FITTING W/ D-RING



4280 RECESSED FLOOR RING W/ 360° - GALVANIZED



4290 LIGHT DUTY RECESSED FLOOR RING
4290-MP MOUNTING PLATE FOR 4290

Door Pulls



2300-12-DC
2" x 12" DOOR PULL
W/ GALVANIZED STEEL CLIP



2300-24-DC
2" x 24" DOOR PULL
W/ GALVANIZED STEEL CLIP



2300-36-DC
2" x 36" DOOR PULL
W/ GALVANIZED STEEL CLIP

Axle Straps & Vehicle Tie-Downs

Please specify color – Red, Yellow or Blue



AS2621-DR
2" x 21" AXLE STRAP



AS2633-DR
2" x 33" AXLE STRAP



MC1511-SL
1" X 11" MOTORCYCLE 'Y'
STRAP WITH 2 SEWN LOOPS



S26108-SE/RTJ 2" X 8' RATCHET STRAP WITH E-FITTING AND RTJ CLUSTER HOOK



S26108-SH 2" X 8' RATCHET STRAP WITH SNAP HOOK



S26108-TSH 2" X 8' RATCHET STRAP WITH TWISTED SNAP HOOK

Bolt-On D-Ring Assemblies



DR-025
1/4" D-RING
W/ BOLT-ON CLIP



DR-5M
3/8" WIRE D-RING
W/ BOLT-ON CLIP

Recovery Straps



RTS-220 2" x 20' - 16,000 LB CAP
RTS-320 3" x 20' - 24,000 LB CAP
RTS-420 4" x 20' - 32,000 LB CAP
RTS-430 4" x 30' - 32,000 LB CAP
RTS-620 6" x 20' - 48,000 LB CAP

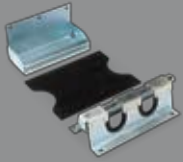
Load Locks & Replacement Parts



5050S STEEL LOAD LOCK (89" - 104")
5050SLX STEEL LOAD LOCK (96" - 112")



5051RJB
HEAVY DUTY ROUND JACK BAR WITH BOLT-ON FEET 86" - 104"



5056-BT
CARGO BAR HOLDER
- FITS 2" OR 4" FEET



5055S
STEEL HOOP SET



5050SH STEEL LOAD LOCK W/ WELDED HOOPS

1" All-Purpose Straps



1050-09-VS 1" x 09' HD RATCHET STRAP W/ VINYL COATED S HOOKS
1050-12-VS 1" x 12' HD RATCHET STRAP W/ VINYL COATED S HOOKS
1050-15-VS 1" x 15' HD RATCHET STRAP W/ VINYL COATED S HOOKS
1050-20-VS 1" x 20' HD RATCHET STRAP W/ VINYL COATED S HOOKS



1050-16-WH 1" x 16' HD RATCHET STRAP W/ WIRE HOOKS & D-RINGS
1050-20-WH 1" x 20' HD RATCHET STRAP W/ WIRE HOOKS & D-RINGS



1060-06-VS 1" x 06' HD CAM BUCKLE STRAP W/ VINYL COATED S HOOKS
1060-09-VS 1" x 09' HD CAM BUCKLE STRAP W/ VINYL COATED S HOOKS
1060-12-VS 1" x 12' HD CAM BUCKLE STRAP W/ VINYL COATED S HOOKS
1060-15-VS 1" x 15' HD CAM BUCKLE STRAP W/ VINYL COATED S HOOKS
1060-20-VS 1" x 20' HD CAM BUCKLE STRAP W/ VINYL COATED S HOOKS



1060-16-WH 1" x 16' HD CAM BUCKLE STRAP W/ WIRE HOOKS & D-RINGS
1060-20-WH 1" x 20' HD CAM BUCKLE STRAP W/ WIRE HOOKS & D-RINGS



1050-15-WS 1" x 15' HD RATCHET WRAP STRAP



1060-15-WS 1" x 15' HD CAM WRAP STRAP

For over two decades, **Pacific Cargo Control, Inc.** has defined continuity with the basic principles and goals that have been the foundation of our growth:

- **Give every customer the best service possible.**

- **Supply high quality cargo restraint equipment, while maintaining competitive prices for our distributors.**

- **Maintain an in-depth inventory to facilitate shipments.**

This catalog contains specifications and information on the most commonly used interior van cargo restraint products. If your application is specialized or you do not find the desired product in our catalog, please contact us directly. We will be pleased to evaluate your requirements.

■ **REFERENCES**

Warranty, Terms & Conditions and Other Important Information:

- **www.pacificcargo.com/legal/warranty.php**
- **www.pacificcargo.com/legal/terms.php**

Warnings and Other Important Product Information:

- **www.pacificcargo.com/legal/warnings.php**

Additional Products and General Company Information:

- **www.pacificcargo.com**



Pacific Cargo Control, Inc.

18200 SW Teton Ave.
Tualatin, Oregon 97062

phone: 800.821.8431
503.692.9297

fax: 866.552.5009
503.692.5674

USA locations: Tualatin, OR
Atlanta, GA
Denver, CO
Elkhart, IN

Canada locations: Winnipeg, Manitoba

www.pacificcargo.com